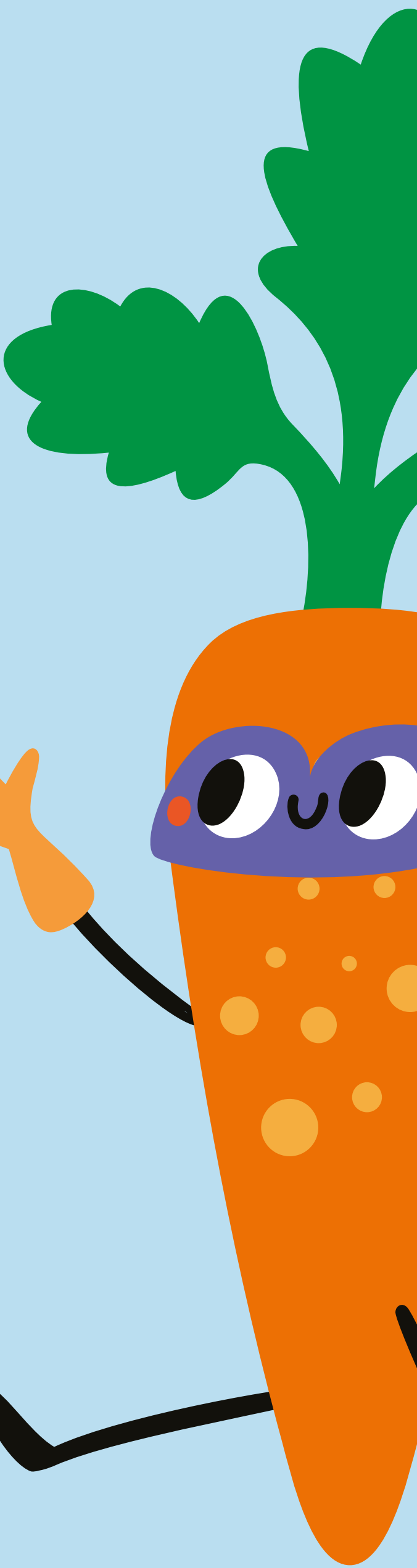


**SUPER
CHARGE
YOUR
LUNCH!**

**BECOME
A SUPER
HEALTHY
SUPER
HERO!**



MONDAY	TUESDAY	WEDNESDAY	THURSDAY	FRIDAY
WEEK 1				
			3 NOV, 24 NOV, 15 DEC, 5 JAN, 26 JAN, 23 FEB, 16 MAR	
Beef Burger	Chicken Pie & Gravy	Roast Chicken with Stuffing & Gravy	Quorn Dipper Taco with Sweet Chilli Sauce (Ve)	Fish Fillet Fingers
Potato Frittata (v)	Swedish Style Plant-Based Meatballs (New) (v)	Plant-Based Shepherd's Pie (Ve)	Mac 'n' Cheese (v)	Margherita Pizza (v)
Potato Wedges or Pasta	Mashed Potatoes or Pasta	Roast Potatoes or Wholemeal Pasta	Diced Potatoes or Herby Garlic Bread	Chips or Tricolour Pasta
Cheesy Pasta (v)	Herby Tomato Pasta with Cheese (v)	Cheesy Pasta (v)	Herby Tomato Pasta with Cheese (v)	Pesto Pasta (v)
Baked Beans (Ve), Grated Cheese (v) Cheese & Beans (v), Tuna Mayo	Baked Beans (Ve), Grated Cheese (v) Cheese & Beans (v), Tuna Mayo	Baked Beans (Ve), Grated Cheese (v) Cheese & Beans (v), Tuna Mayo	Baked Beans (Ve), Grated Cheese (v) Cheese & Beans (v)	Baked Beans (Ve), Grated Cheese (v) Cheese & Beans (v), Tuna Mayo
Egg Mayo Roll (v), Cheese Roll (v), Tuna Mayo Roll	Ham Roll, Egg Mayo Roll (v), Cheese Roll (v), Tuna Mayo Roll	Ham Roll, Egg Mayo Roll (v), Cheese Roll (v), Tuna Mayo Roll	Cheese Roll (v), Egg Mayo Roll (v)	Egg Mayo Roll (v), Cheese Roll (v), Tuna Mayo Roll
Apple Strudel & Custard (v) (50% Fruit)	Fresh Fruit Wedges (Ve)	Fresh Fruit Jelly (Ve) (50% Fruit)	Chocolate Orange Jelly Mousse (v) (New)	Gingerbread Biscuit (v)
WEEK 2				
			10 NOV, 1 DEC, 12 JAN, 2 FEB, 2 MAR, 23 MAR	
Quorn Hotdog (v)	Pork Sausages & Gravy	Roast Beef & Gravy	Chicken Curry	Fish Fillet Fingers
Margherita Wrap (v)	Roasted Butternut Squash Curry (Ve)	Roast Quorn Fillet (Ve) with Stuffing & Gravy	Breaded Bean & Vegetable Grill (Ve)	Margherita Pizza (v)
Potato Wedges or Pasta	Mashed Potatoes or Brown & White Rice	Roast Potatoes or Wholemeal Pasta	Brown & White Rice or Pasta	Chips or Tricolour Pasta
Herby Tomato Pasta with Cheese (v)	Cheesy Pasta (v)	Herby Tomato Pasta with Cheese (v)	Cheesy Pasta (v)	Pesto Pasta (v)
Baked Beans (Ve), Grated Cheese (v), Cheese & Beans (v)	Baked Beans (Ve), Grated Cheese (v), Cheese & Beans (v), Salmon Mayo	Baked Beans (Ve), Grated Cheese (v), Cheese & Beans (v), Tuna Mayo	Baked Beans (Ve), Grated Cheese (v), Cheese & Beans (v), Tuna Mayo	Baked Beans (Ve), Grated Cheese (v), Cheese & Beans (v)
Egg Mayo Roll (v), Cheese Roll (v)	Ham Roll, Cheese Roll (v), Salmon Mayo Roll, Egg Mayo Roll (v)	Ham Roll, Cheese Roll (v), Tuna Mayo Roll, Egg Mayo Roll (v)	Ham Roll, Cheese Roll (v), Tuna Mayo Roll, Egg Mayo Roll (v)	Cheese Roll (v), Tuna Mayo Roll, Egg Mayo Roll (v)
Pear & Apple Crumble & Chocolate Custard (50% Fruit) (v)	Fresh Fruit Wedges (Ve)	Fresh Fruit Jelly (Ve) (50% Fruit)	Iced School Sponge (v)	Favourite Cookie (Ve)
WEEK 3				
			17 NOV, 8 DEC, 19 JAN, 9 FEB, 9 MAR	
Beef Bolognese	Breaded Chicken Katsu Curry	Roast Chicken with Stuffing & Gravy	Quorn Burger (v)	Battered Fish Fillet
Plant-Based Grill (Ve)	Cheese Pinwheel (v)	Plant-Based Sausages & Gravy (Ve)	Vegetarian Lasagne (v)	Margherita Pizza (v)
Spaghetti or Potato Wedges	Brown & White Rice or Pasta	Roast Potatoes or Wholemeal Pasta	Diced Potatoes or Herby Garlic Bread	Chips or Tricolour Pasta
Cheesy Pasta (v)	Herby Tomato Pasta with Cheese (v)	Pesto Pasta (v)	Herby Tomato Pasta with Cheese (v)	Cheesy Pasta (v)
Baked Beans (Ve), Grated Cheese (v), Cheese & Beans (v), Tuna Mayo	Baked Beans (Ve), Grated Cheese (v), Cheese & Beans (v), Tuna Mayo	Baked Beans (Ve), Grated Cheese (v), Cheese & Beans (v), Tuna Mayo	Baked Beans (Ve), Grated Cheese (v), Cheese & Beans (v)	Baked Beans (Ve), Grated Cheese (v), Cheese & Beans (v)
Egg Mayo Roll (v), Cheese Roll (v)	Ham Roll, Cheese Roll (v), Salmon Mayo Roll, Egg Mayo Roll (v)	Ham Roll, Cheese Roll (v), Tuna Mayo Roll, Egg Mayo Roll (v)	Ham Roll, Cheese Roll (v), Tuna Mayo Roll, Egg Mayo Roll (v)	Ham Roll, Cheese Roll (v), Tuna Mayo Roll, Egg Mayo Roll (v)
Fresh Fruit Wedges (Ve)	Oaty Fruit Crunch (Ve) (50% Fruit)	Fresh Fruit Jelly (Ve) (50% Fruit)	Apple Sponge & Custard (v)	Chocolate Brick Wall (Ve)

Vegetables and a variety of salads are served daily. **v = Vegetarian** **Ve = Vegan.**