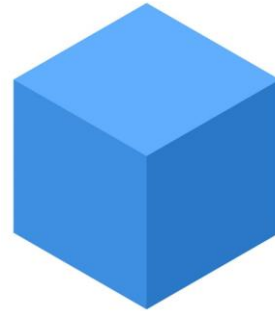


Year 5 Homework, Spring Term Week 8

Maths: Speedy Six



1. $346 - 92 =$
2. $333 \times 4 =$
3. What is $50 \div 10 =$
4. $24 \div 3 =$
5. Round to the nearest 10.
1234
6. How many faces does a cube have?



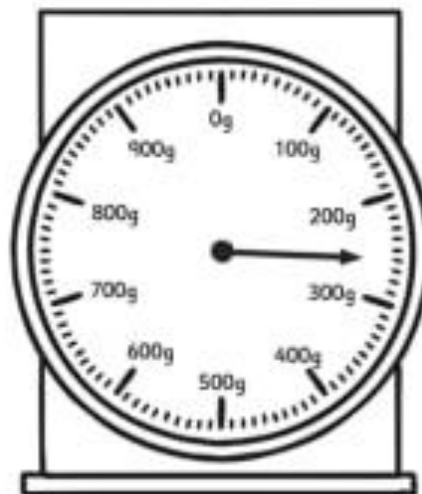
Quick Comprehension: Complete the sheet on 'Wanted'. Children should allow themselves one minute to read the text, and five/ten minutes to answer the questions. Some of the questions are quite tricky, so don't worry if you have to talk them through with an adult.

Spellings

Core	Support
pension	serious
explosion	curious
session	calves
mission	elves
fraction	leaves
direction	wolves
optician	after
ocean	never
Asian	under
recommend	river

Optional Maths Extension:

What is the weight on the scale?
Core Support



The jumps are in tens.

Homework is due in on 17th March.