

Maths: Speedy Six



1. $346 - 92 =$
2. $333 \times 4 =$
3. What is $50 \div 10 =$
4. $24 \div 3 =$
5. Round to the nearest 10.
1234
6. How many faces does a cube have?



1. What are all the multiples of 7 between 70 and 80?
2. What is 26.8 divided by 100?
3. What $\frac{4}{7}$ of 70? (remember...divide by the bottom and times by.....)
4. What is 23 minutes before 5.10pm?
5. Round 6 456 to the nearest 100.
6. How many faces does a sphere have?



Reading Comprehension
Please complete the reading comprehension.

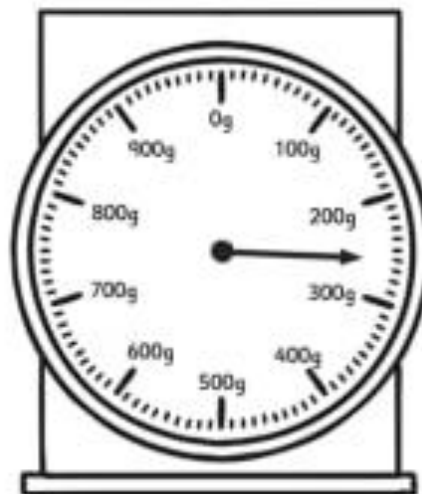
Spellings

<u>Core</u>	<u>Support</u>
you've	also
they've	always
we've	almost
you'll	along
they'll	already
you're	alone
we're	before
she'd	more
desperate	morning
exaggerate	or

Optional Maths Extension:

One bonus house point available

What is the weight on the scale?



The jumps are in tens.